

# Court Hire

## Instructions for First Time Users



Assuming that you have registered for court hire, and you have booked a court, you would have received a PIN code which will enable you to access the courts.

As you approach the tennis courts from the carpark, you should look to the left and as shown in the first image.

You will see a keypad on the side of the lighting box.

Enter your PIN code to open the box.

**NOTE: PIN CODES ARE CHANGED APPROX EVERY 6 WEEKS.**

TWO keys are inside:

- one to open the padlock to the gate to access courts; and
- the other to unlock the light box padlock to turn on the court lights (bottom image)

Once you have used these keys to open the gate, and/or turn on the lights, **PLEASE return them to the box and lock.** Use the pin code and place the keys inside, ready for next hirer.

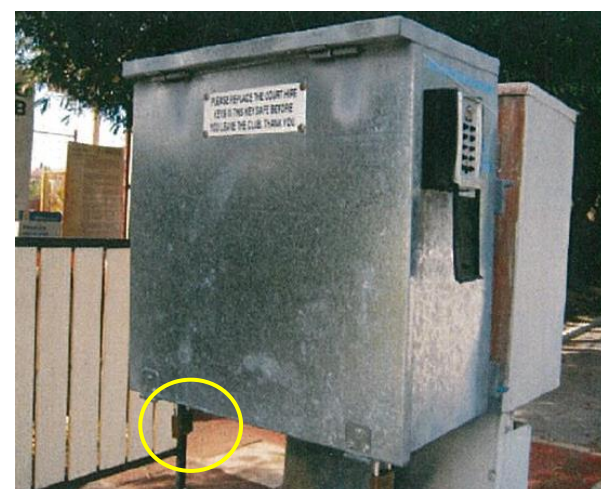
If you are using the court lighting please leave the gate & light box padlocks UNLOCKED until you have finished your tennis.

If other people are still playing after you finish then they should be advised to switch off and lock everything up.

**If others are not playing, you should turn off the lights and lock up.**

**IF you are turning off your court lighting and other people are still playing, please make sure you turn off the RIGHT ones.** (It can take up to 15 minutes for lights to come back on.)

**If you do not play due to illness, injury, or rain, please text, or email ASAP.**



**Enjoy your Tennis at Leederville Tennis Club**